



Thanks for purchasing our product, please read this manual carefully before using it

Please be sure to keep it for future reference

This manual is subject to change without any notice

Orbita shall not be held accountable for any accident and hazard arising from  
incorrect user operations



# ORBITA SMART LOCK

MODEL: E3093

Guangdong Orbita Technology Co., Ltd. (Marketing Center and Manufacturing Base in China)

Address: Orbita Technology Park, Changbu Village, Xinxu Town, Huiyang District, Huizhou,  
Guangdong Province, P.R.C

Tel: +86-752-3633501 +86-752-3633502 +86-752-3633503

Fax: +86-752-3633600; +86-752-3633900

Customer Service Hotline: 400-834-6688

(Guangdong Orbita Technology Co., Ltd. reserves the right of final interpretation of this manual)

Installation and User Manual

V21-01

# Table of Contents

## 1 : Product Overview

1-1:Appearance	2
1-2:Product Benefits and Features	2
1-3:Technical Specifications	3
1-4:Safety Precautions	4
1-5:Battery Charging Safety	5
1-6:Maintenance	6

## 2 : Product Installation

2-1:Packing Slip	5
2-2:Installation Instructions	5
2-3:Safety Precautions	6
2-4:Installation Steps	6
2-5:Step-by-Step Installation Instructions	8

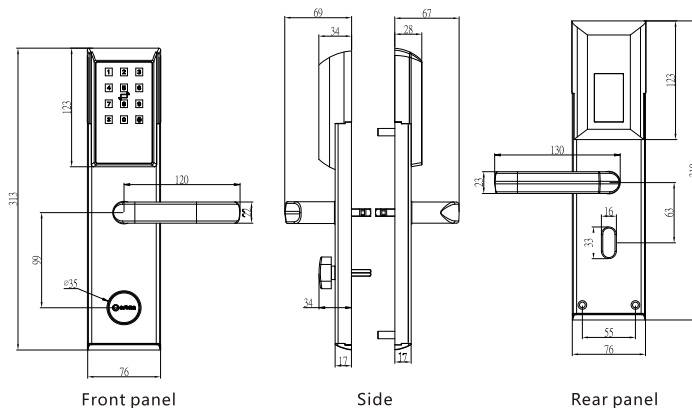
## 3:How to use

## 4: Operating Guide (operate with the app)

Software Download	8
1: Add Lock	9
2: Delete Lock	10
3: Send Key	11
4: Obtain Password	12
5: Key Management	12
6: Password Management	12
7: IC Card	13
8: Authorize Admin	13
9: Operating Record	14
10: Setting	14
11: Restore Factory Settings	15
12: Log in to Front End Management	16

## 1 : Product Overview

### 1-1 : Appearance (Unit:mm)



### 1-2 : Product Benefits and Features

Model 3093 is a door lock targeting the shared accommodation industry such as homes, apartments, hotels, bed & breakfasts, and public rental housing. This model comes with Bluetooth as a standard configuration and unlocks through passwords, cards, mechanical keys, and App. It also comes with a temporary charging port.

Made of 304 stainless steel material and with PVC inductor cover, and a hidden keyhole, the dock lock boasts a neat and elegant appearance and ease of use and installation, and provides high price/performance ratio.

## 1-3 : Technical Specifications

Panel material	SUS 304
Lock body material	SUS 304
Requirement for door thickness	40-110mm
Operating temperature	-10°C~+55°C
Bluetooth standards	Bluetooth4.1BLE
Supported mobile operating systems	Above Android 4.3/IOS7.0
Power supply mode	4.5V (i.e. 4 dry cells)
Low battery voltage warning	4.8V
Standby power	35μA
Operating power	< 200mA
Unlocking time	≈0.5 Second
Key type	Capacitive touch button
Number of passwords	APP send password custom password
Supported card types	MIFARE M1
Number of IC cards	100 Pcs
Unlocking ways	App / Password / Card / Key / Bluetooth

## 1-4: Safety Precautions

1. Keep the panel away from corrosive substances to avoid damage to the surface coating.
2. Do not operate the product with wet hands to prevent liquids such as water or drinks from entering the lock body.
3. Do not press the keypad with excessive force or with sharp objects.
4. Keep your fingers clean while using this product. To ensure normal use, keep the fingerprint area clean as the surface may become smudged after it is used for a period of time.
5. Do not pull the product with excessive force.
6. Do not use water, benzene or alcohol to clean the product; use a soft and dry cloth to clean the lock body.

## 1-5: Charging Safety

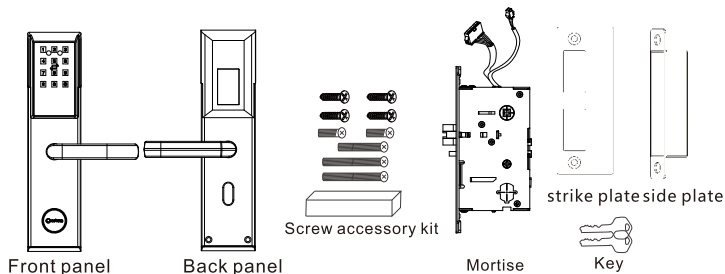
1. This product uses 4 AA alkaline dry batteries, please install the battery according to the correct positive and negative electrodes.
2. When the voltage is lower than 4.8V, a low voltage alarm will sound every time the lock is unlocked. Pay attention to replace the battery in time.
3. Do not short the positive and negative terminals of the battery.
4. Please use the specified battery in this product, do not connect other batteries modified by yourself.
5. Do not discard the replaced battery to avoid polluting the environment.

## 1-6 : Precautions for Use

- 1: In the Initializing state, the door is locked from inside and cannot be unlocked with the initial password "123456".
- 2: It supports double (deadbolt) lock, in which state you cannot unlock with a password or a card. However, you can unlock via App even when the door is double locked.  
Double lock function can be enabled or disabled via your App.
3. Latch bolt test: After unlocking, press down the handle to trigger the latch bolt switch, which normally would lock the door in 5 seconds.
- 4: Records of unlocking by mechanic keys can be tracked.
- 5: No batteries should be installed inside the lock before the lock is fitted in the door.
- 6: Please manage your password carefully, and change it regularly to prevent password leakage.
- 7: After the battery alarm goes off, you must charge the battery or replace it with a new battery within a week.
- 8: Make sure the door is completely locked when you go out.
- 9: When your password or card cannot unlock properly, you can use the mechanical key instead. Please keep the mechanical key properly.

## 2. Product Installation

### 2-1: Product List

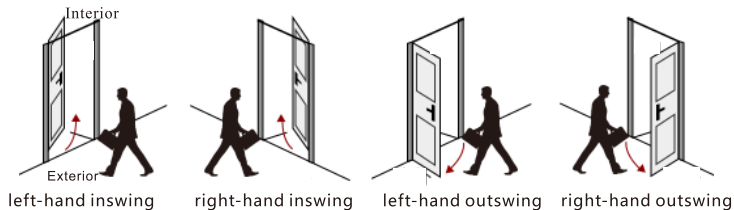


Other: User manual\*1,  
Drilling mould\*1, Warranty Card\*1

**Note :** The door lock frame is larger than 40mm, and the door thickness can be installed within the range of 40-50mm. If the door thickness is greater than 50mm, a rectangular bar is required, and ask seller for it. Please check if the list is complete after unpacking. If there is any missing, please ask the seller in time.

### 2-2: Installation Instructions

Confirm the door handing (this smart lock can be used for left-hand outswing, left-hand inswing, right-hand inswing and right-hand outswing doors)

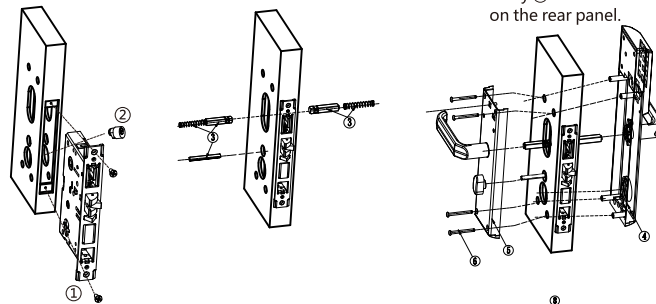


### 2.3 Installation Precautions

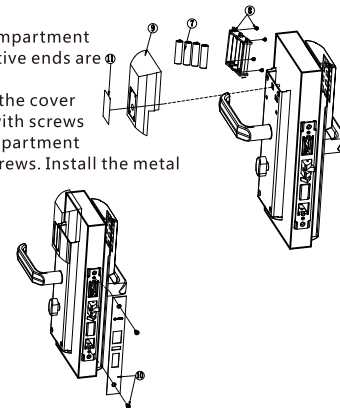
Please check the accessories before installing the door lock. After completing the installation, you can continue to install. If your door hole needs to be punched, please seek the help of a professional lock installer. Unauthorized handling may result in unnecessary property damage.

### 2-4: Installation Steps:

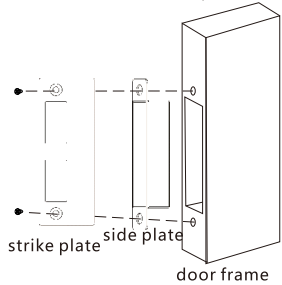
- ① Put the lock body into the open space of door frame and fasten with screws.
- ② Put the cylinder into the lock body.
- ③ Install the long and short square shafts into the front and rear door frame, respectively.
- ④⑤ Align the front panel and the rear panel with the holes on the door frame and install respectively. ⑥ Fasten with screws on the rear panel.



- ④ ⑦ Insert batteries into the battery compartment and make sure the positive and negative ends are pointing in the right direction;
- ⑧ Put the battery compartment into the cover of battery compartment and fasten with screws
- ⑨ Insert the cover of the battery compartment into the rear panel and fasten with screws. Install the metal sheet on the battery compartment.
- ⑤ ⑩ Finally install the side trim and fasten with screws.



6 : Install the strike plate and side plate on the door frame.

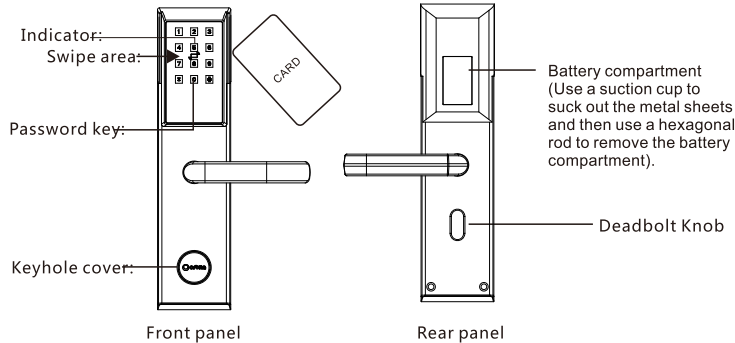


7: After the installation is complete, open the key cover on the front panel. Use the key to unlock and check whether the door unlocks properly, and whether the handle and the double lock function properly. If the lock cannot unlock or handle or double lock do not function properly, please check whether the lock cylinder, the square shafts of handle and deadbolt knob are installed correctly.

8: If there is no problem in the above steps, use the card that has been set to swipe at the display area of the front panel to check whether the door can unlock properly. If so, the door lock installation is complete.

### 3:How to Use

3-1: Unlock by card: Tap the card at the swipe area and you will hear a beep prompt with blue light lit up. Then press down on the handle to unlock.



3-2 : Lock from inside: Rotate the deadbolt knob on the rear panel for double lock function

3-3 : To unlock by password, you need to do it with App. For operation details, please refer to the "Operation Guide" in this manual

## 4 : Operation Guide

### 1 : Operate the lock with App:

#### Software download

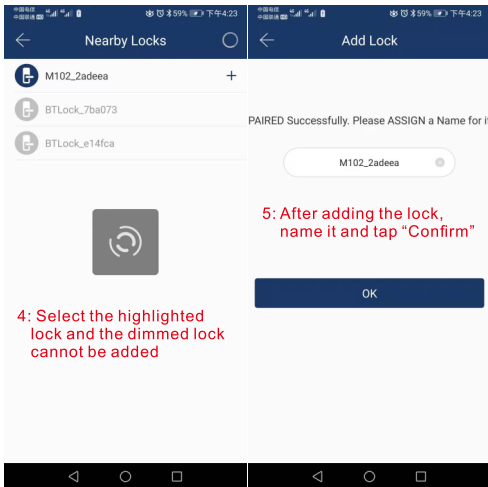
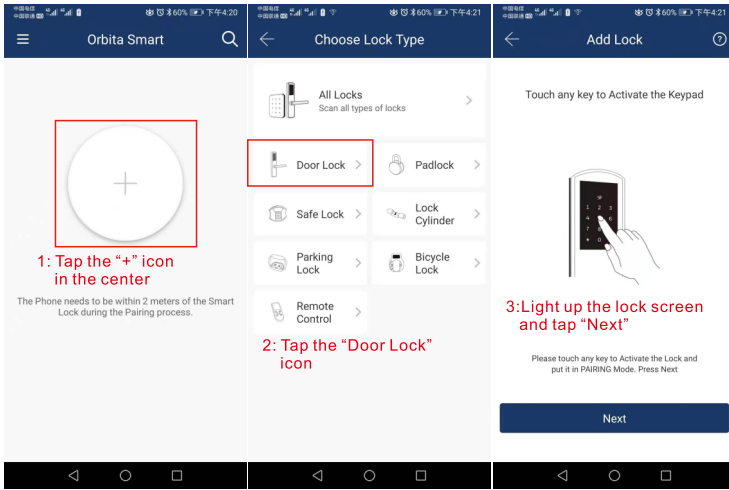
(You can also download it by scanning the QR code on the last page of the user manual)IOS users can search "Orbita Smart" on the Apple's App store to download the English version. Android users can search "Orbita Smart" on Google Play to download the English version.

#### 1: Add Lock

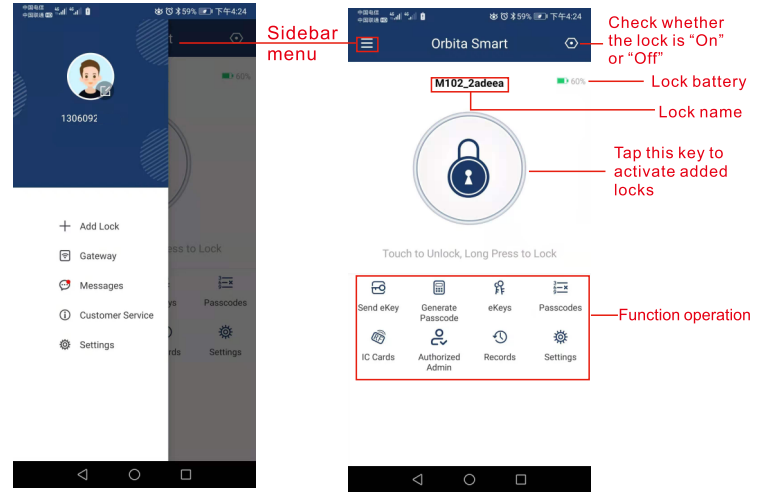
Warning: After the Bluetooth admin is added to the lock, all passwords, IC cards and fingerprints previously added will become invalid and be cleared.

Tip: Please enable the Bluetooth function on your mobile phone, and make sure it is near the lock during operation.

Download the "Orbita Smart" App, register an account and log in to your account (You need to remember the password of your account as it is required to delete the lock later). After login, the interface is displayed as follows:

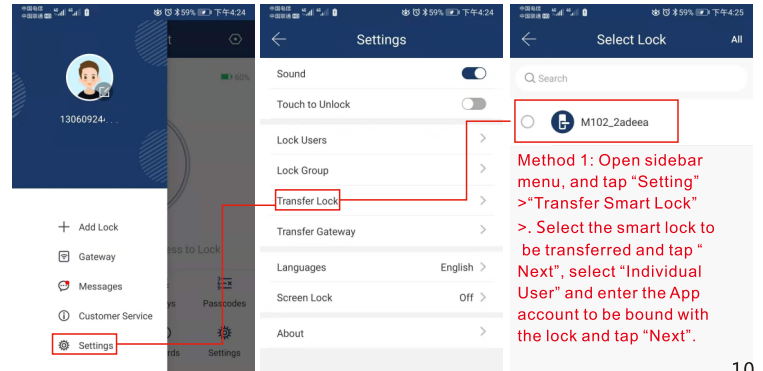


After adding, naming and confirming, tap the "Confirm" key to enter the interface shown below:



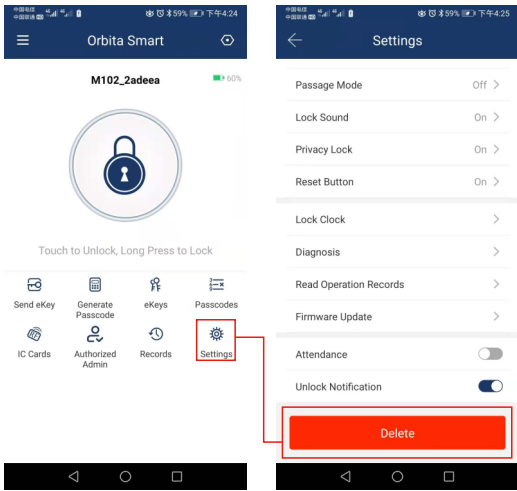
(Note: A lock can correspond to one mobile phone only but a mobile phone can add multiple locks. If a lock you need to be added into another mobile phone, you need to delete the lock from current mobile phone, or you can use the "Transfer Smart Lock" function under "Setting" on the sidebar menu.)

## 2: Delete lock



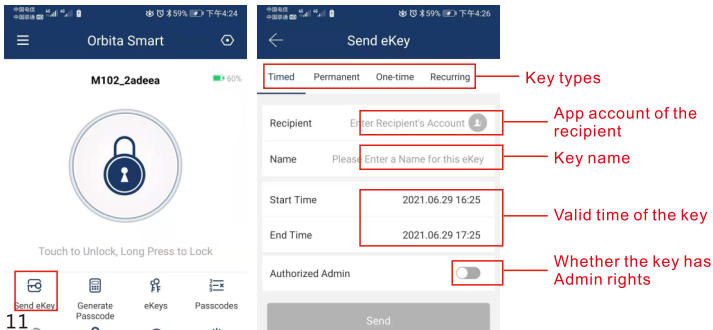
## Method 2:

Tap "Setting" and then on the new interface, tap "Delete", and then enter the App account and password to delete the lock. (After the lock is deleted, all the unlocking information including passwords previously added will be cleared)



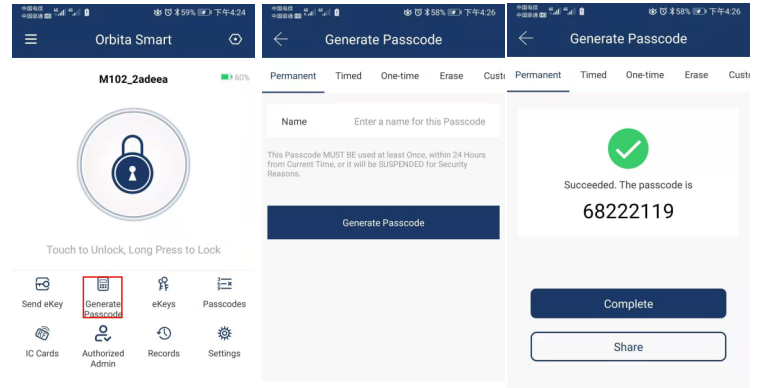
## 3 Send Key

**Note:** You don't need to stay near the lock to send a digital key. You can send a digital key anytime and anywhere as long as you open the App, but the recipient of the digital key must also have an account.



## 4 Obtain Password

Tap the "Obtain Password" icon to enter the new interface and name the password, and then tap the "Obtain Password" icon to display the "Obtain Password" interface. After obtaining the password, you can share it with others via WeChat, SMS, email, Messenger/WhatsApp, who can unlock by entering the password on the lock followed with the "#" key.



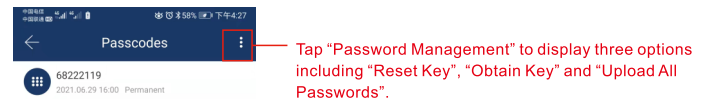
## 5 Key Management

Tap the "Key Management" icon to enter the "Key Management" interface, where you can manage all the keys, delete and change the rights of the "key".



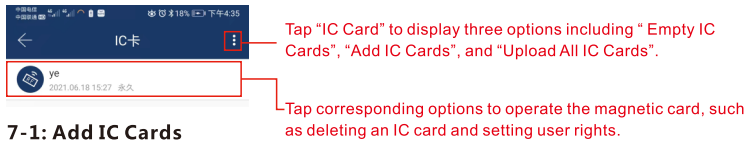
## 6 Password Management

Tap the "Password Management" icon to enter the "Password Management" interface, where you can manage all the passwords, delete and change the rights of the "Password".

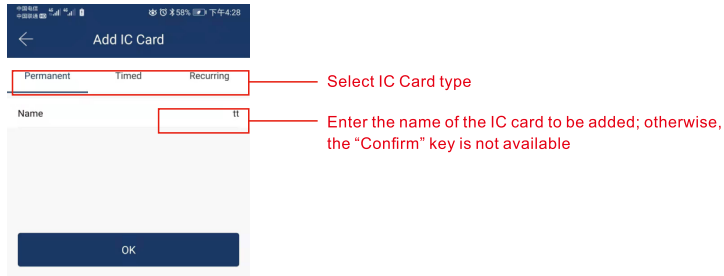


## 7: IC Card

Tap the "IC Card" icon to enter the "IC Card Management" interface, where you can manage all the IC Cards, delete and change the rights of the "Password".

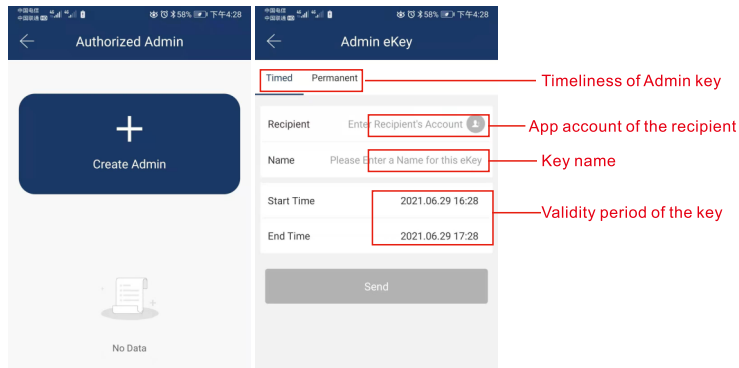


### 7-1: Add IC Cards



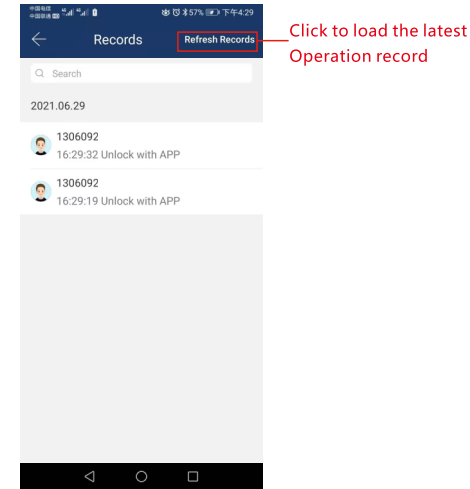
## 8: Authorize Admin

Tap the "Authorize Admin" icon, and then the "Authorize Admin" interface is shown as follows:



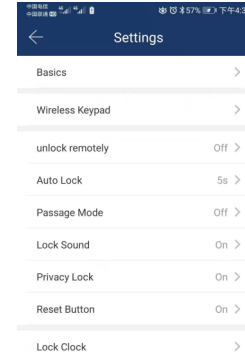
## 9: Operating Record

After you tap the "Operating Record" icon, the interface is shown as follows:



## 10: Setting

After you tap the "Setting" icon, the interface is shown as follows. Detailed description will be displayed after you tap each option.



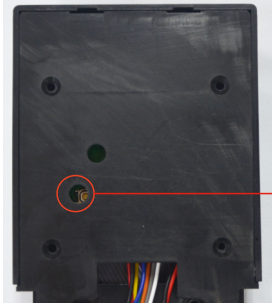


## 11: Restore Factory Settings

Restoring factory settings will empty information including all passwords, cards, mobile phone Admins, and unbind your mobile phone.

### 11-1 Method 1 of Restoring Factory Settings

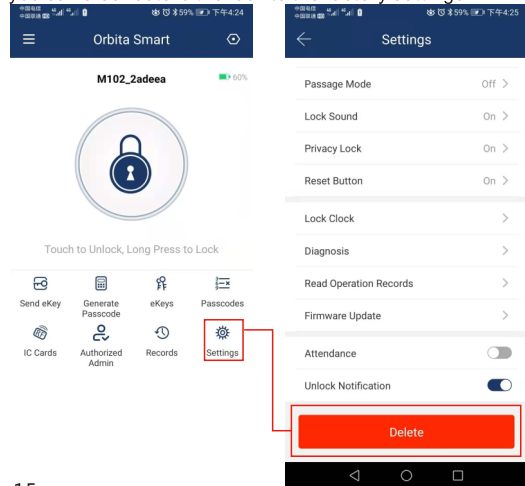
Long press the "Reset" button on the back of the front panel cover and if you hear two beeps, the lock has been restored to factory settings.



Reset button hole

### 11-2 Method 2 of Restoring Factory Settings

By unbinding your mobile phone on the App (namely delete mobile phone Admin), you can also restore the lock to the factory settings.



You need to enter the password of the App account when deleting the mobile phone Admin

## Web-based Login

Open the browser, and enter lock.orbitasmart.com, and then enter the user name and password (consistent with those on the App).

**\*Note: If the actual operations are inconsistent with this manual due to updates of product software and hardware, please contact customer service to obtain the latest user manual or open the official website [www.orbitalock.com](http://www.orbitalock.com) to download it. We apologize for any inconvenience!**

If you have any issue during the installation and use of the door lock, please call our service hot-line, and we are always at your service!

**E-mail : [service@orbitatech.com](mailto:service@orbitatech.com)**

**WEB : [www.orbitatech.com](http://www.orbitatech.com)**